

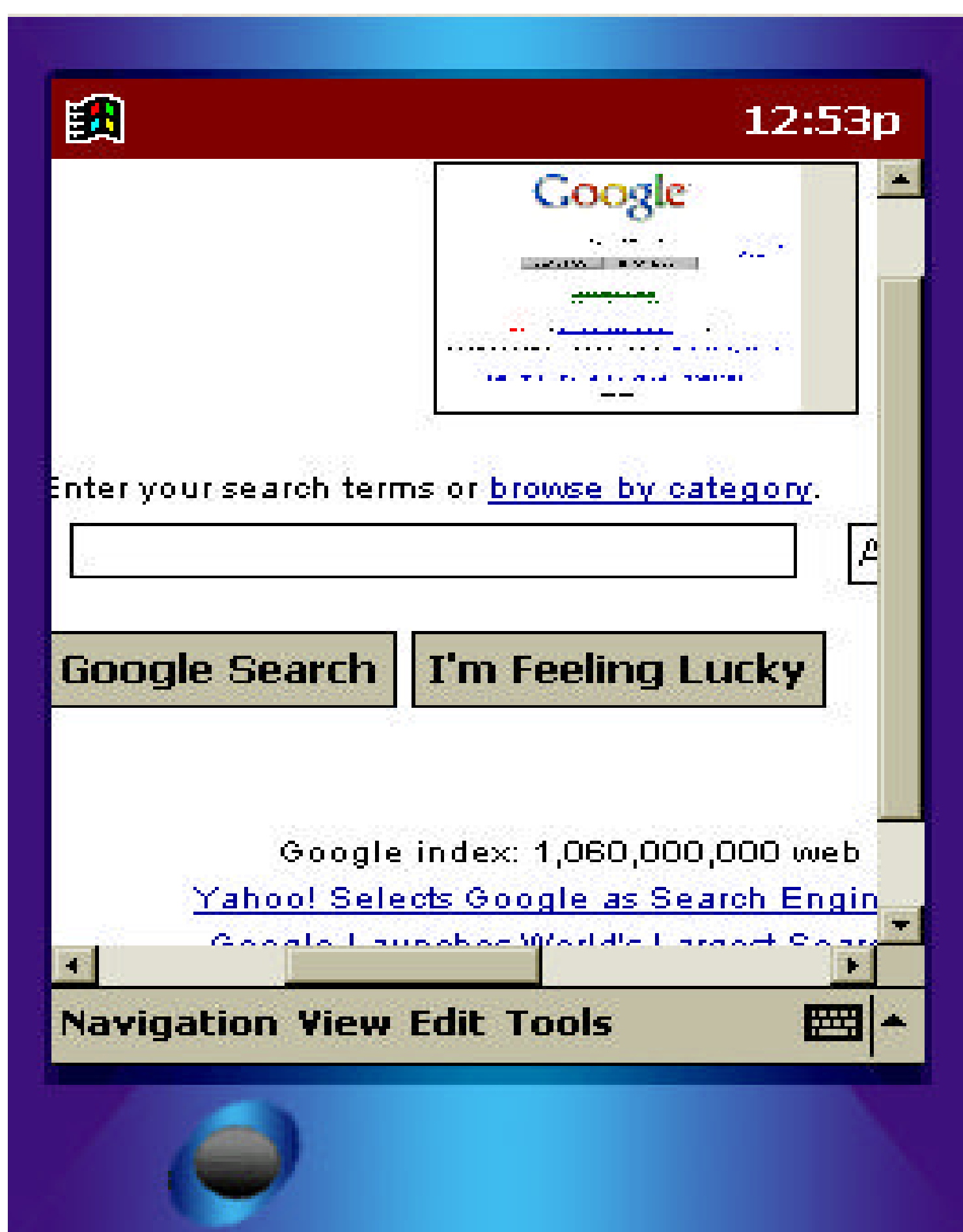


on Handheld Devices



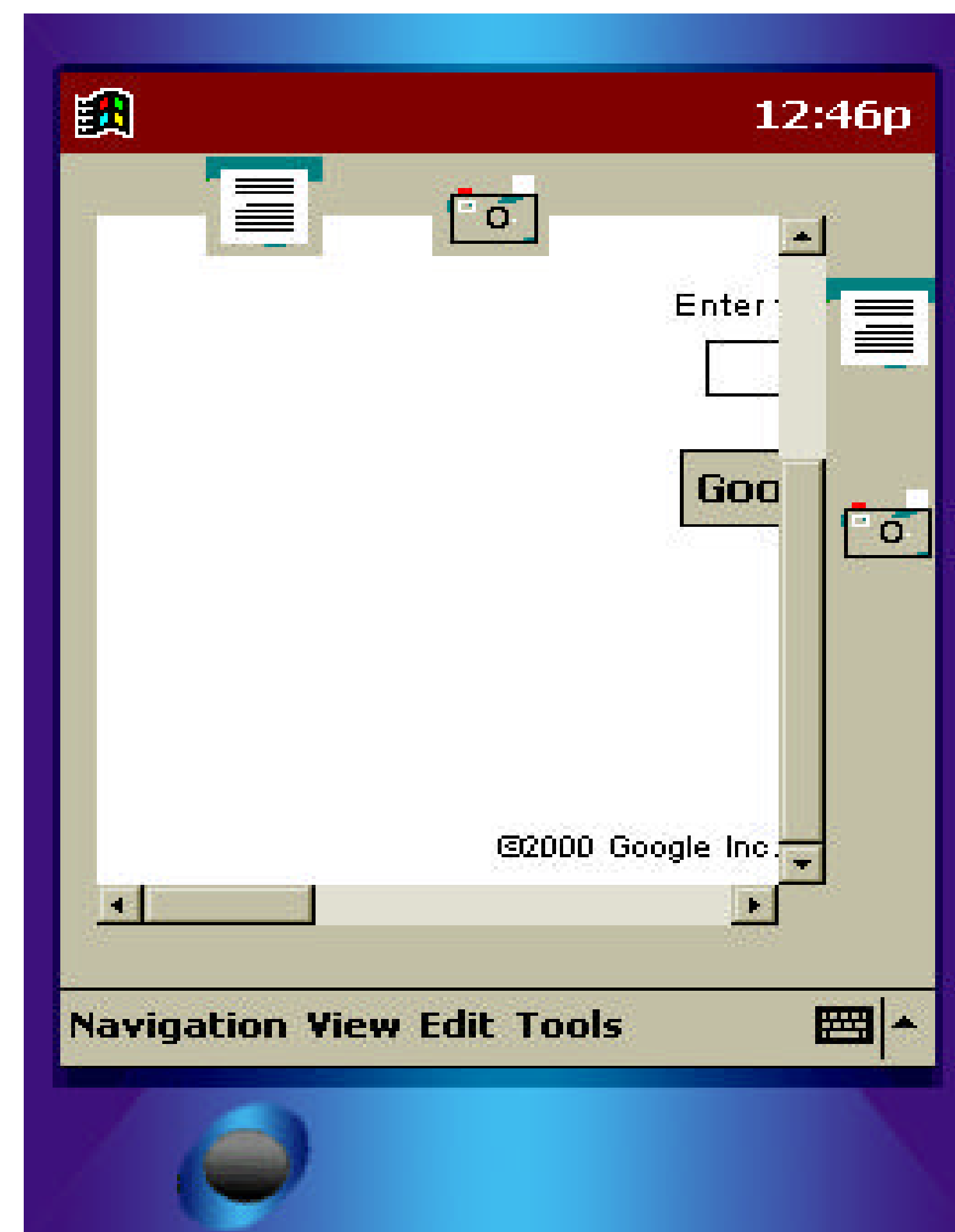
<http://www.cc.gatech.edu/gvu/ii/webpda>

New Visualization Prototypes



Overview

Normal browser plus an overview displayed in the top right corner. Clicking on the overview navigates the browser.



Fisheye

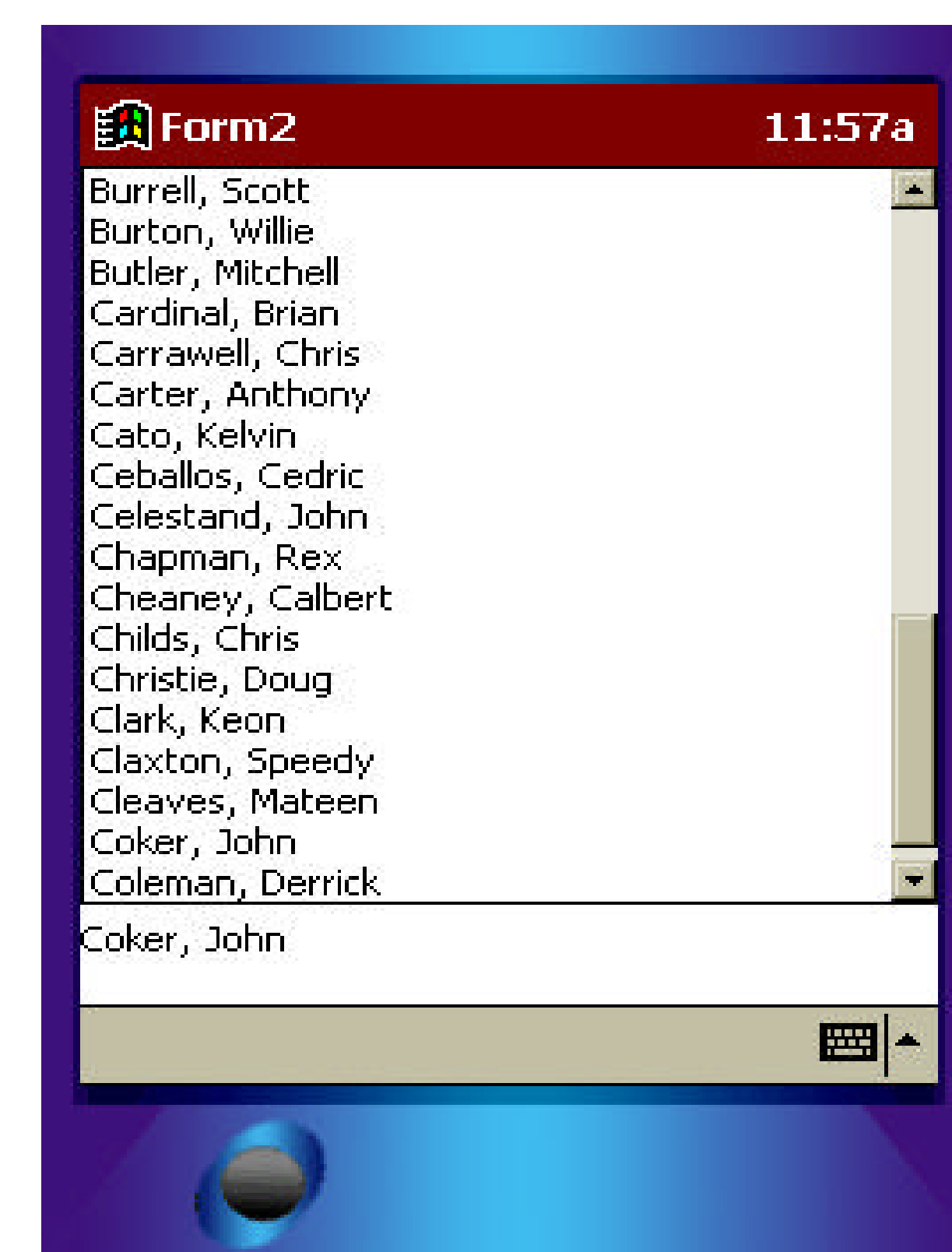
Normal browser surrounded by a gutter. Icons provide context about other page elements surrounding your current position.

Ongoing Work

While evaluating the prototypes, it was discovered that a significant problem is determining what are the right ways for a user to interact with a PDA.

Testing basic interaction techniques may lead to better overall designs for PDAs. One operation performed often is scrolling. Because of the small screen size, it is necessary to move down the screen to view the rest of the information.

Sample Test



Above we see a screenshot showing a list of names. At the bottom is the target name to find. An empirical study has been designed to evaluate the use of scrolling on small screens.

Special Thanks

This work is partially supported by Microsoft Corp. John Stasko (stasko@cc.gatech.edu) spends an undue amount of time advising me.

