

Charging and Billing

Russ Clark
November 19, 2008

Charging and Billing in IMS

- One of the primary motivations for the use of IMS over basic SIP is the ability to “make money”
- Normally this means being able to bill for the usage of a service
- What is required to do this?
 - Identify users and the services they can access
 - Record billable activities
 - Bill them

Triple A

- Authentication - who are you?
- Authorization - are you allowed?
- Accounting - how many times?
- We'll focus on the second two in our billing discussion

Charging and Billing Systems

- Billing - focused on collecting money from the customer
- Charging - the broader term describing the process. We will talk about “Charging Architectures”
- Authorization - confirm that the charge-based event is allowed to proceed
- Accounting - keeping track of the things to be billed for - e.g. bits, bytes, calls, minutes

Product Charging Models

1. One Time Purchase

- download of a file, ringtone, game, etc.

2. Counted Access

- credit system for purchases - e.g. 10 songs, 100 text messages

3. Time Based

- time of usage, good for 10 days

4. Monthly Subscription

- flat rate

Potentially need to support various combinations of the above in a single application.

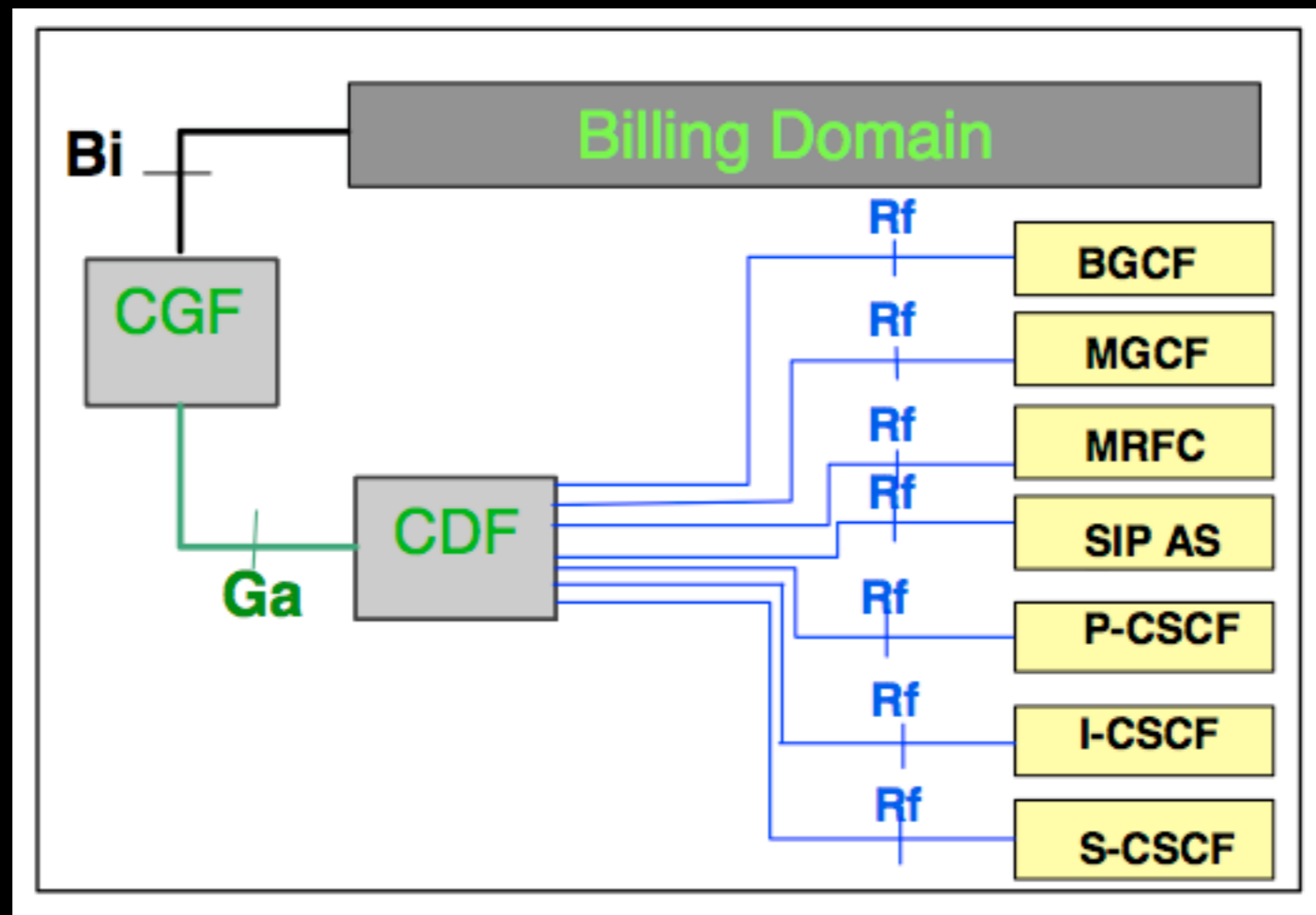
3GPP Charging Specs

- #TS 32.200 Charging Principles
- #TS 32.225 Charging Data Description for the IMS
- #TS 32.240 Charging Architecture and Principles
- #TS 32.250 Charging Management - Circuit Switched (CS) Domain Charging
- #TS 32.251 Charging Management - Packet Switched (PS) Domain Charging
- #TS 32.252 WLAN Charging
- #TS 32.260 IP Multimedia Subsystem (IMS) Charging
- #TS 32.270 Charging Management - Multimedia Messaging Service (MMS) Charging
- #TS 32.271 Charging Management - Location Services (LCS) Charging
- #TS 32.272 Push-to-talk over Cellular (PoC) Charging
- #TS 32.273 Charging Management - Multimedia Broadcast and Multicast Service (MBMS) Charging
- #TS 32.274 Charging Management - Short Message Service (SMS) charging
- #TS 32.295 Charging Management - Charging Data Record (CDR) Transfer
- #TS 32.296 Charging Management - Online Charging System (OCS):Applications and Interfaces
- #TS 32.297 Charging Management - Charging Data Record (CDR) File Format and Transfer
- #TS 32.298 Charging Management - Charging Data Record (CDR) Parameter Description
- #TS 32.299 Charging Management - Diameter Charging Applications
- #TS 32.421 Subscriber and Equipment Trace - Trace Concepts and Requirements

IMS Charging (3GPP)

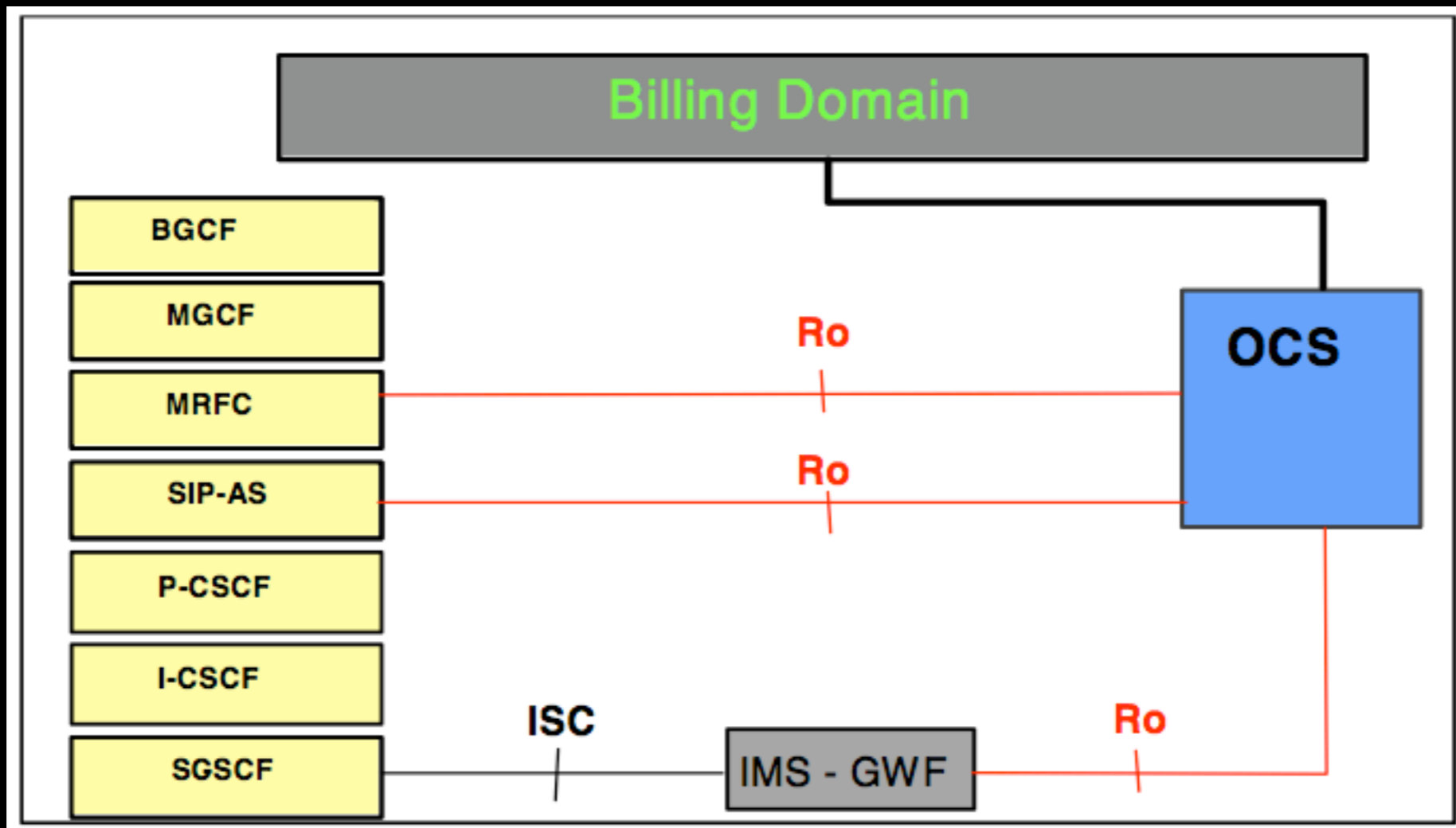
- **Offline Charging**
 - Record call data, add to billing records
 - Primarily a logging function
 - CDR - Charging Data Records
- **Online Charging**
 - also known as credit based charging
 - per-transaction and pre-paid services
 - must be able to deny service if no credit is available
 - Real-time constraints

Offline Charging Architecture



- CGF - Charging Gateway Function
- CDF - Charging Data Function
- CCF - Charge Collection Function - CGF+CDF
- Rf - Diameter - Charge Data Request/Response
- Bi - CDR - Charging Data Records

Online Charging Architecture



- OCS - Online Charging System
- Ro - Diameter - Debit and Reserve Units Request/Response
- MRFC - Media Resource Function Controller

SIP Headers

Two SIP headers for charging related functions, defined in RFC 3455, inserted by P-CSCF

P-Charging-Vector - globally unique id for charging related to this session

*P-Charging-Vector: icid-value=1234bc9876e;
 icid-generated-at=192.0.6.8; orig-ioi=home1.net; term-ioi=home2.net*

icid - IMS charging identifier
ioi - Inter-Operator Identifier

P-Charging-Function-Address - which CCF is being used

P-Charging-Function-Addresses: ccf=192.1.1.1; ccf=192.1.1.2

Offline Example - Start

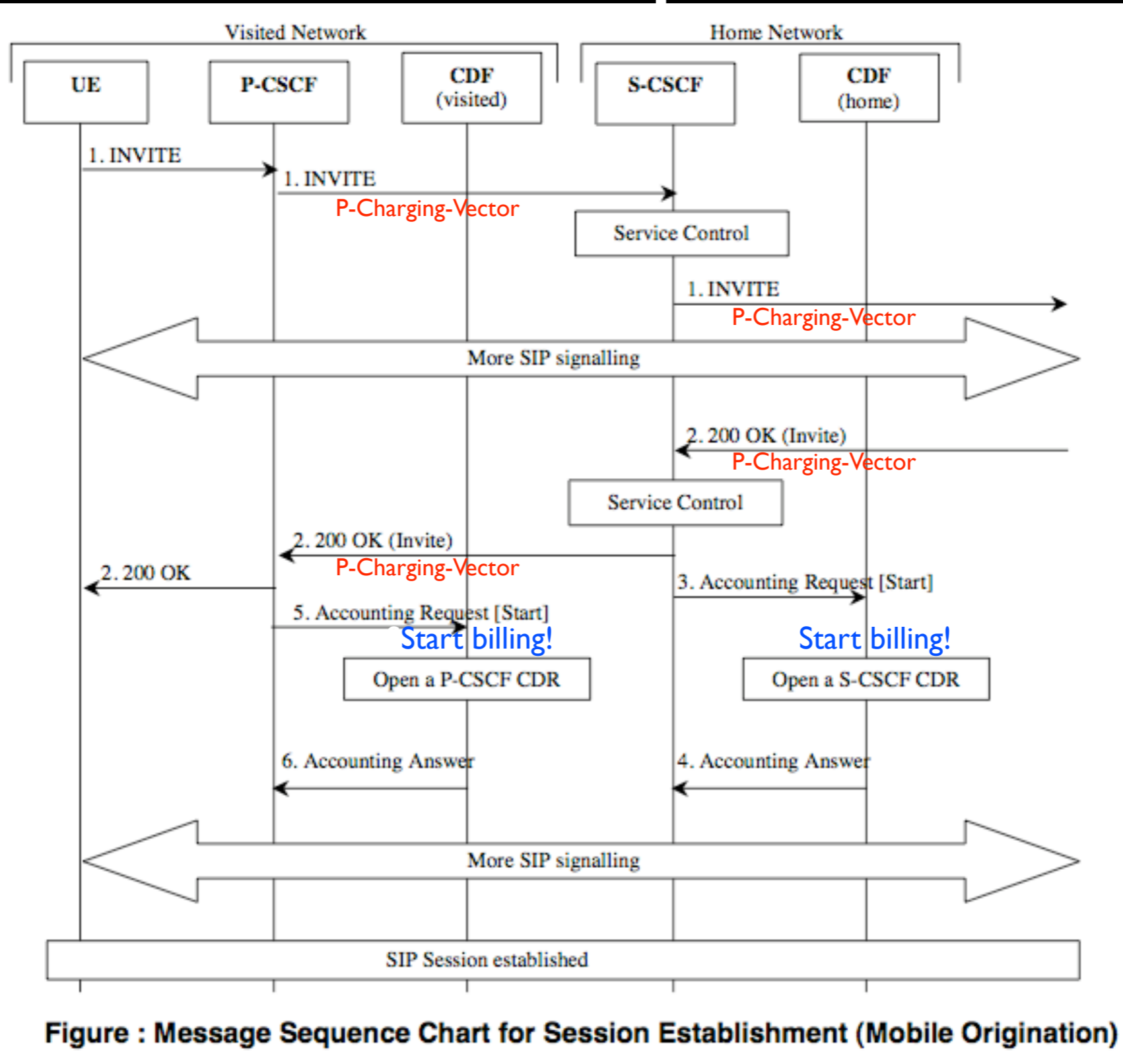
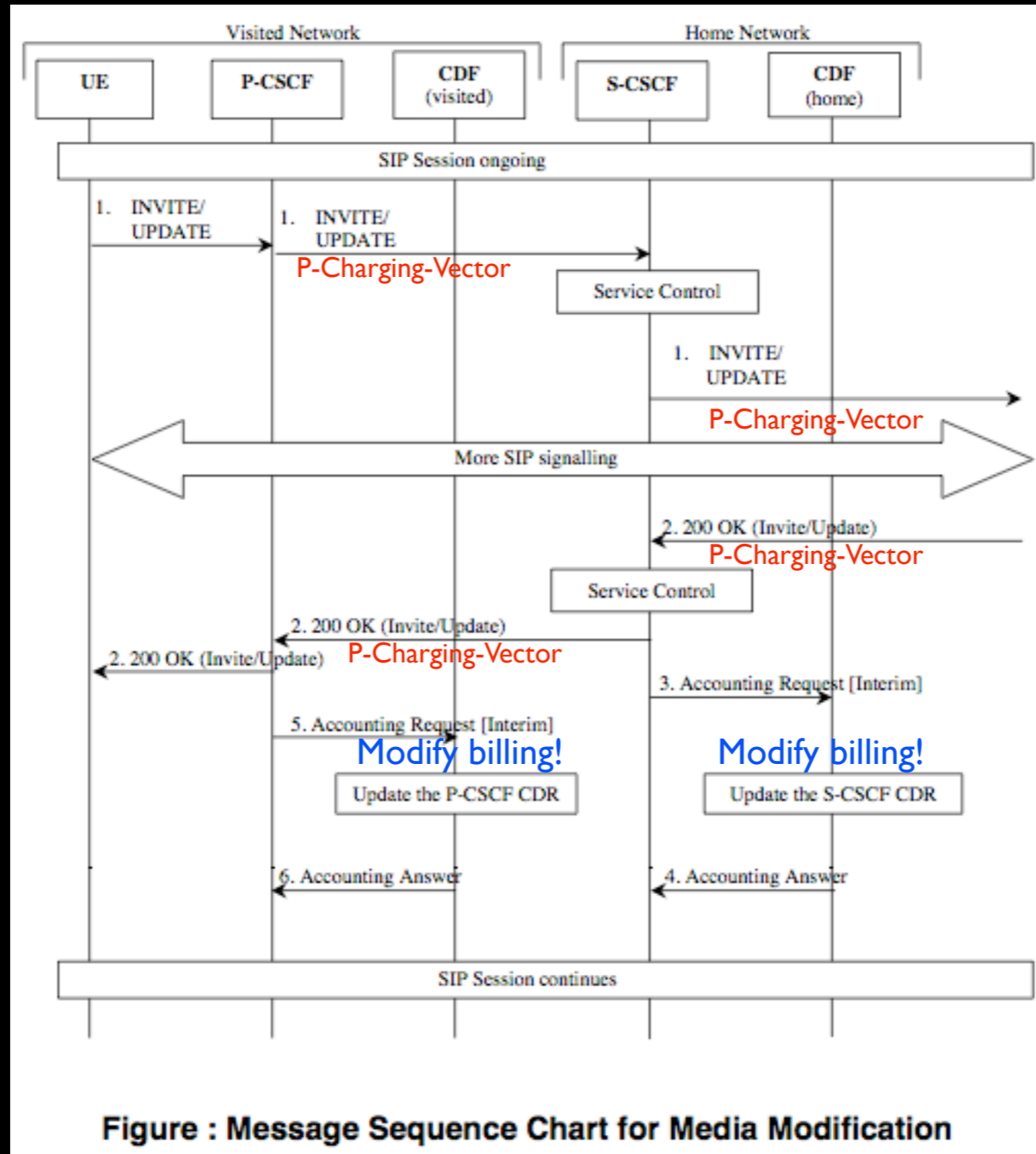
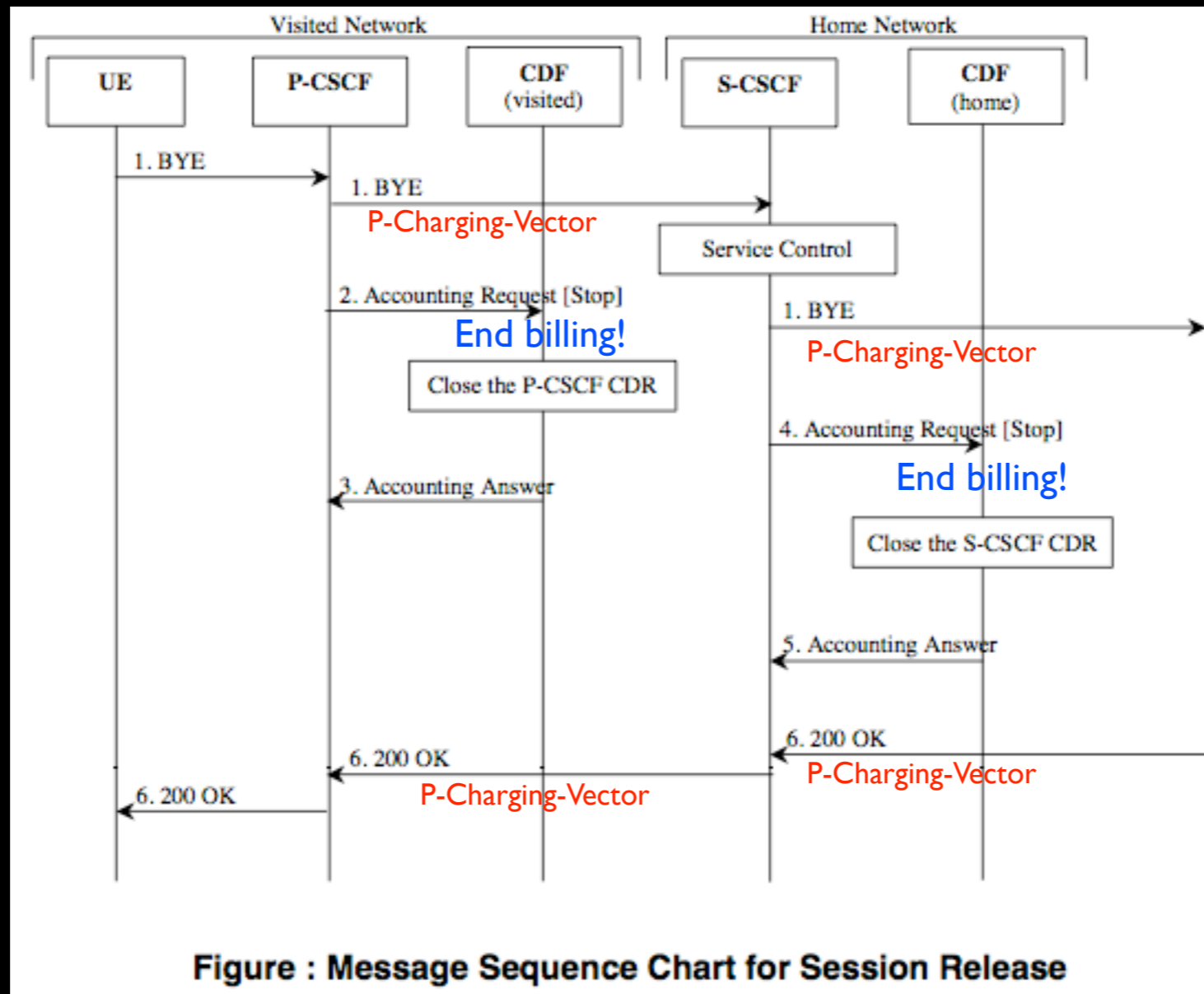


Figure : Message Sequence Chart for Session Establishment (Mobile Origination)

Offline Example - Modify



Offline Example - End Session



Offline Multiparty Call

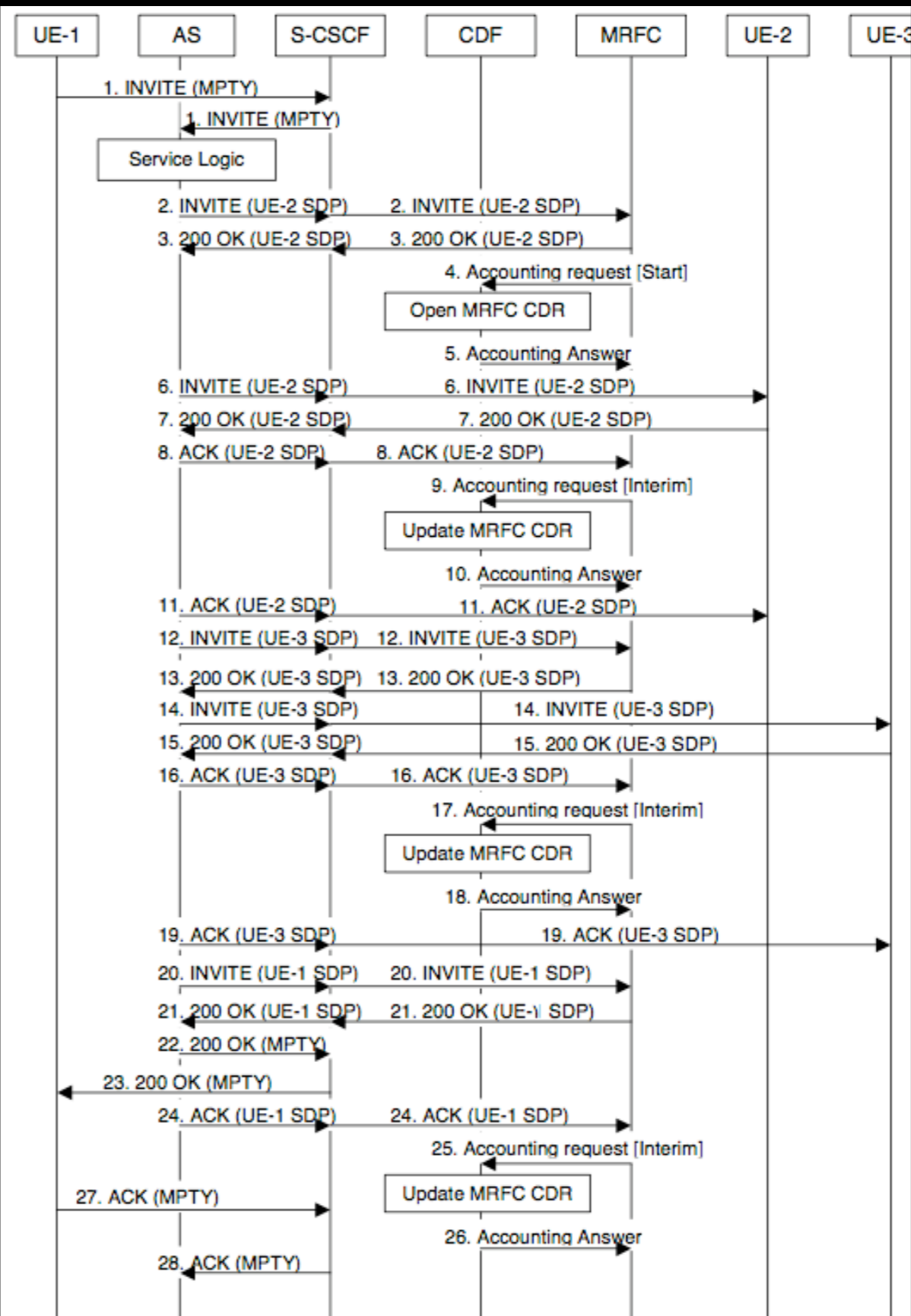
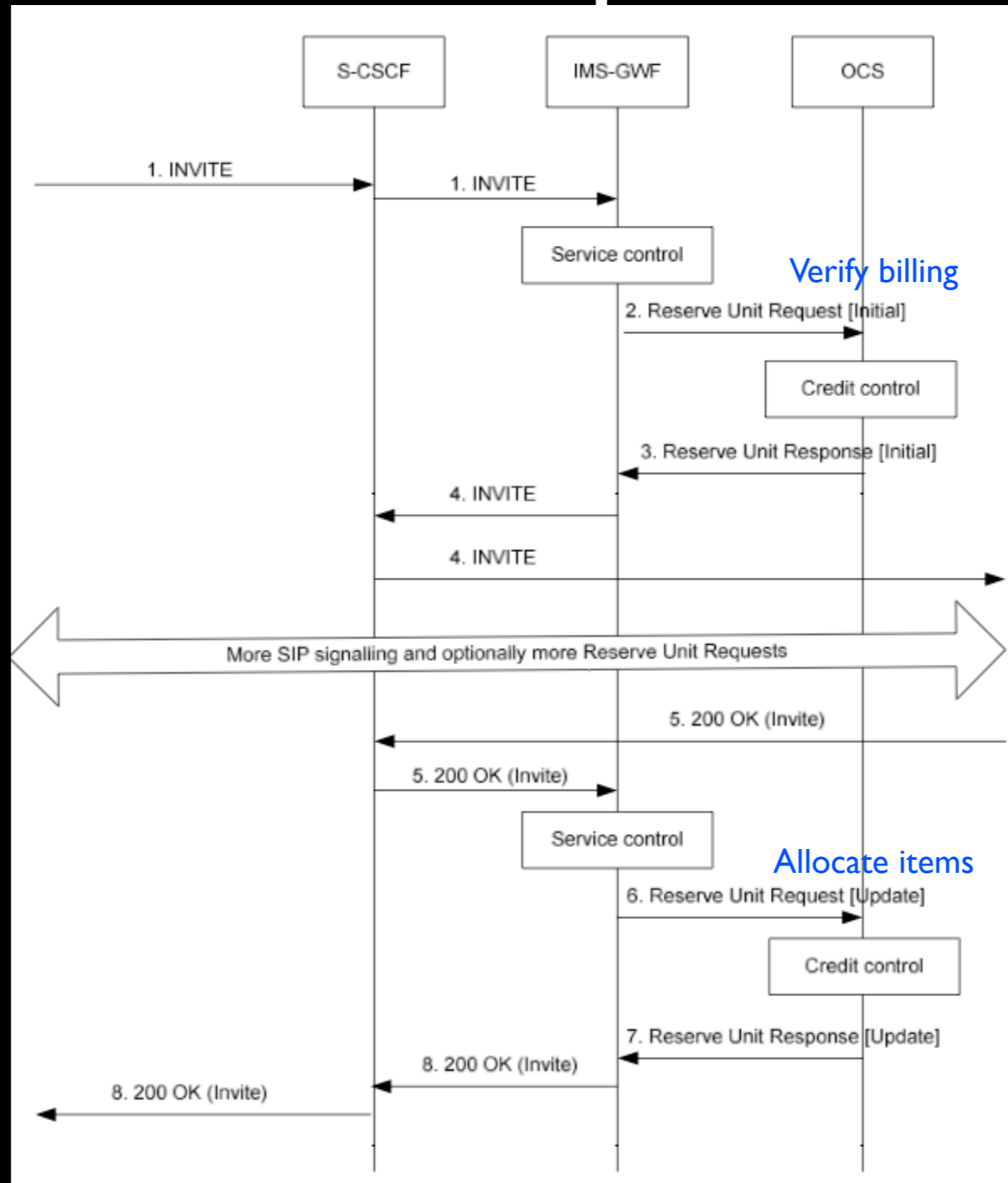
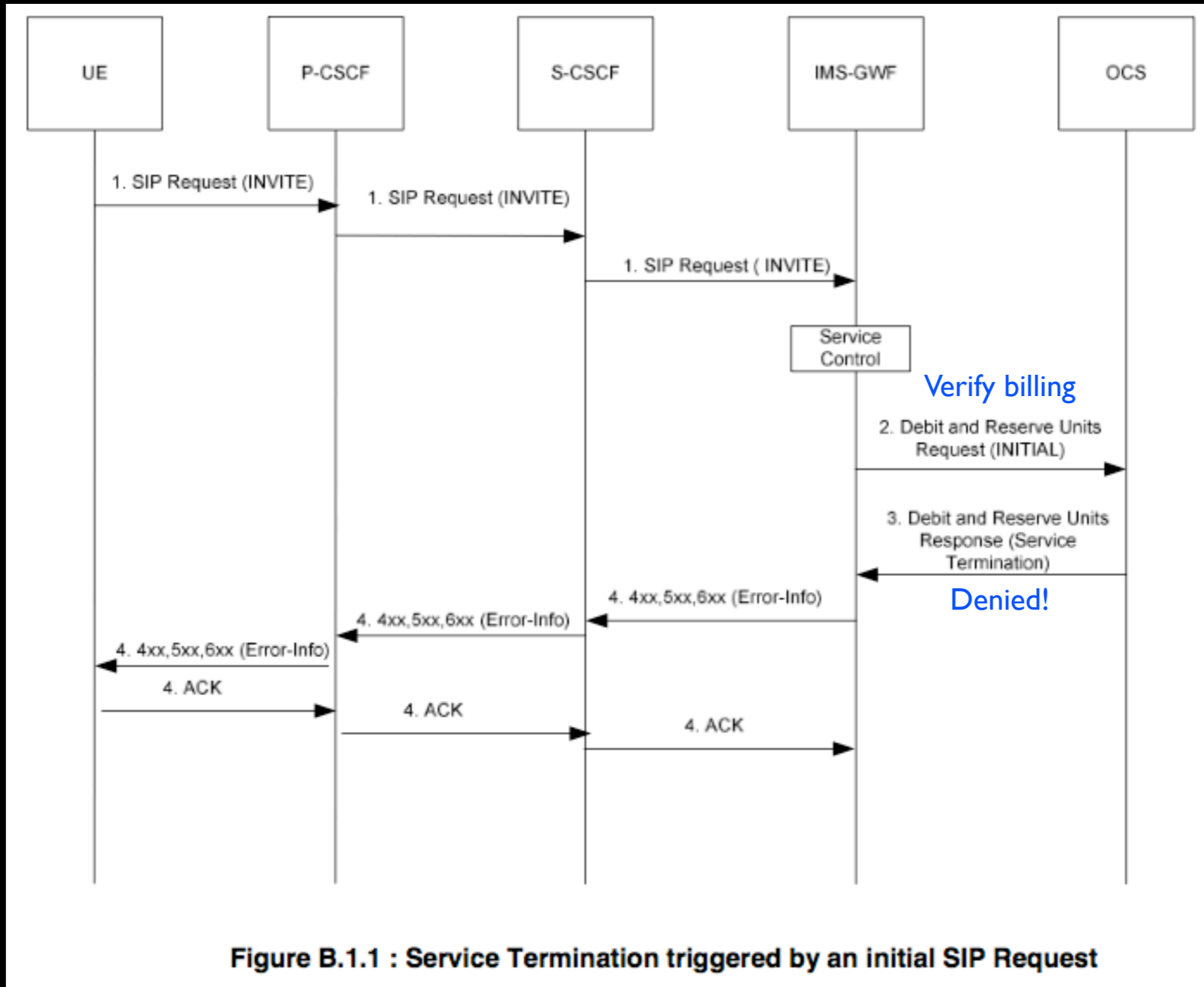


Figure : Message Sequence Chart for Multi-Party Call Establishment in MRFC

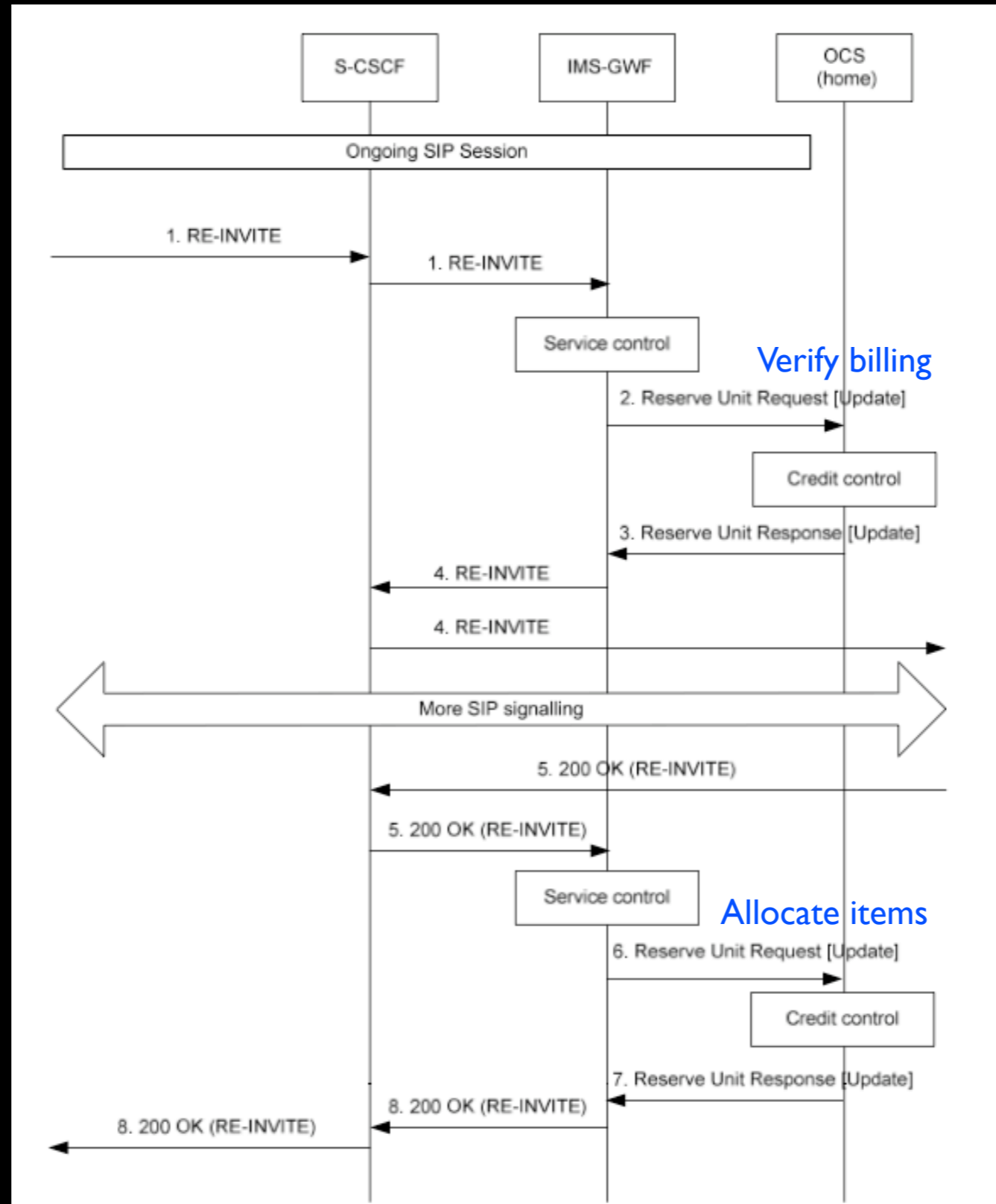
Online Example - Start



Online Example - Denied



Online Example - Modify



Online Example - Termination

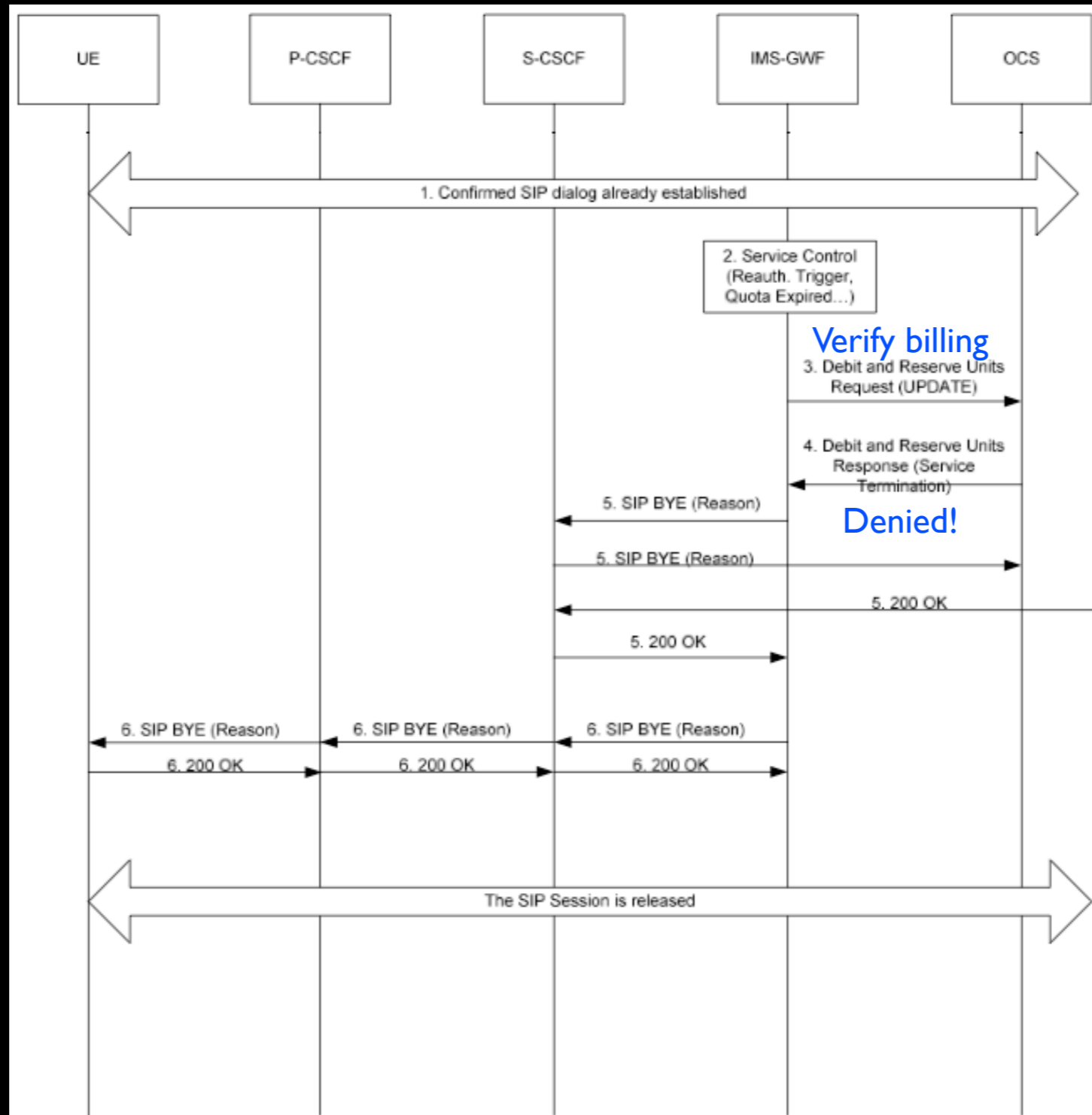


Figure B.3.3 : Service Termination triggered by the Charging Application procedures as defined in TS 32.299 [50] within a confirmed SIP dialog

Online Example - End

